

## Keeping it All Right

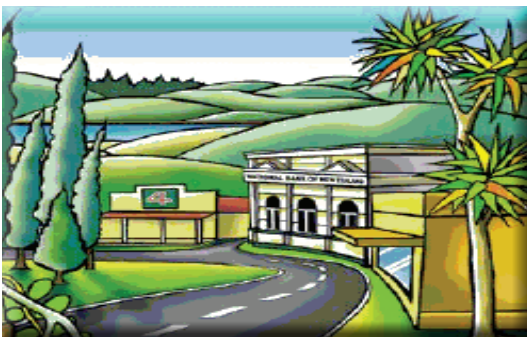
In January's Press, John Bluck compared the life of the early settlers to what we have today and concluded that it is still 'all right'. The same edition's Heritage Hotspot listed some 24 enterprises in the main street of Paparoa in the early 1900's. We can assume they were all well supported by the public of the time. But our main street looks somewhat different now. So what has changed?


Many enterprises have come and gone as community needs have changed but we do still have a busy main street and a great many more enterprises hidden away.

In the past it was necessary to have a main street address but now transport and communications mean a business can be located virtually anywhere. A quick scan of the April 2011 Paparoa Business Directory reveals over 45 separate business enterprises operating in the wider Paparoa area. Surprising!

But what has not changed from the early days is that these businesses need our support to survive. Even more so today when we are faced with many choices and the temptation is to

look outside the district for goods and services. Local businesses are part of our community. Their owners belong to



local organisations and contribute in many ways outside work hours. Their children attend our schools and we ask them to support local fund-raising events. They are our friends and neighbours. Without them our community would lose its heart and we would be forced to travel for even the most basic goods and services. These people have put their commitment and financial investment into Paparoa. By supporting them we are contributing to the health and wellbeing of our community and ensuring the future of Paparoa. Let's each of us do what we can to keep it all right here. 

## Kid's Big Day Out at Pahi

More than 30 kids lined up at Pahi for the New Year's Day Kids Sprat Fishing Contest organised by Gary (Gravy) Greaves and Gary Corbett.

Fishing is only permitted from the wharf or the shore, and this year the kids were lucky as it



seemed a school of sprats was idling past the wharf at just the right moment. There were sprats everywhere but by the rules of the day, the sprats are returned to the water after they've been measured. Every child received a prize for their efforts.

For the 2nd year in a row, Wellsford-Luxinn Combined Buffalo Lodges made a very generous cash donation which was used to purchase prizes at Fishing Camping Outdoors in Whangarei, who in turn gave a large discount and then donated some goods themselves. Pahi Store, Kaipara Driving Academy, and Gary & Laurel Greaves donated iceblocks, drinks, sausages for the barbeque and some fishing rods. Gary Corbett explained that the aim of the day is to teach kids how to fish and to have fun. Each child must be accompanied by a parent who may bait the line and take the catch off the hook but may not help with the actual fishing.

## FIRE BAN



There is a complete fire ban on all land in the Kaipara District from January 18th until further notice.

The lighting of fires in the open air is restricted and permits are required.

Permits will only be issued where suitable fire protection measures can be provided. Consideration should be given as to whether the fire can be delayed until the fire danger reduces. Permits will not be issued where the fire can be reasonably delayed or the task can be achieved without the use of fire.

All fires in the open air require permits with the exception of the following:

Commercially constructed barbeques, incinerators (complying with NZS 5262, 5435 and 5442), cooking fires such as umu, hangi and spit fires, subject to the following conditions:

- They are supervised by a responsible adult at all times.
- A pressurised supply of water is at hand.
- The fire is extinguished as soon as the task is complete.
- A clear area of at least 10 metres is maintained around the fire.
- The fire is no larger than 2 x 2 metres.
- A warranted fire officer can request that any barbecue, incinerator or other fire be extinguished if considered a danger.

All persons responsible for fires may be held liable for all costs associated with control of that fire. Holding a permit for a fire does not remove this liability.

To obtain a permit apply on line at: [havingafire.org.nz](http://havingafire.org.nz) or phone Forest Protection Services (09) 430 7707

### INSIDE

- Out & About ..... 2
- Back to School..... 3
- The Pouto Restoration ..... 4
- Museum Musings ..... 6
- Kaipara Life..... 7
- Sport in Paparoa ..... 8
- Library News ..... 9
- The Paparoa Fire Force ..... 9
- Heritage Hotspot..... 11

## Paparoa Press PP

PUBLISHED MONTHLY BY

Progressive Paparoa Inc. (PPI),  
for Paparoa, Pahi, Matakoho,  
Whakapirau and Tinopai.

CIRCULATION 950

CONTACT US

- paparoapress@orcon.net.nz
- ph 09 431 7144 after hours
- PPI, PO Box 107, Paparoa 0543
- www.paparoa.org.nz

ADVERTISING

Rate Card available by email  
Publication date 1<sup>st</sup> of month  
Booking & Copy Deadline:  
15<sup>th</sup> of month prior

Paparoa Farmers Market  
"The friendly market"

Wide selection of local goods



Fortnightly SATURDAYS  
9am-noon at the Village Green

February 9<sup>th</sup>, 23<sup>rd</sup>  
March 9<sup>th</sup>, 23<sup>rd</sup>

ph Mary 431 7123 or Graham 431 7209

**Does your  
organisation have  
something interesting  
to tell the community?**

**We'll be happy to place  
your news  
space permitting**

**contact Paparoa Press  
email preferred  
paparoapress@orcon.net.nz  
09 431 7144 a/h**

## OUT &amp; ABOUT around the District

**Don't forget** the Wearable Arts Gala meeting for people interested in forming a new organising committee at 7.30pm, Tuesday February 19th at Paparoa Hall. If you have any ideas or suggestions please attend; it's not compulsory to join the committee!!

**The public toilets** at the Village Green are well patronised at this time of year. Recreational Services, the new company servicing the public toilets, cleans them every day, seven days a week. From mid-December to mid-February they are cleaned twice a day at 9am and 1pm. Outside these months, it is once a day in the morning. That's pretty good service, thank you Kaipara District Council and Recreational Services.

**The new look Paparoa Press** will be one year old in March. If you have any comments you'd like to make about the publication to assist us with making it better or more interesting, please send your remarks to The Editor at paparoapress@orcon.net.nz

**Early January** saw the deaths of two people with strong links to Paparoa. Freda Cooke, wife of Sean was buried at St Mark's in Hook Road. Sean and Freda operated the Paparoa Four Square before passing it to their daughter Maura and her husband, David Edwards. Before leaving the district a couple of years ago Sean and Freda lived in the accommodation attached to the Medical Centre.

Jennifer Hames, youngest daughter of Edgar and Rita Hames of Ledbury Farm, Station Road and descendent of an original Albertland family died in Auckland. Ledbury Farm is still owned by family members.

**Don't forget** – if you have any documents/photos etc that you wish to copy, the Paparoa Press printer is available at very good rates. See Robyn at Skelton's Paparoa Drapery, ph 431 7306.

**Congratulations** to Jennifer Seddon from Tinopai who completed her schooling at Otamatea High School last year and has gained a place at the Elam School of Fine Arts, University of Auckland, where she'll begin her studies when the new semester begins on March 4.

**There are some enterprising young people** / budding entrepreneurs in Paparoa. Seen opposite Depot Rd recently a group of children with table, chairs and umbrella selling tadpoles!

**Local muso** Alistair Taylor, who organised the musicians for the recent Matakoho Music & Arts Festival, was extremely pleased with the way the day went. A few more locals in the crowd would have been welcome but the audience was really appreciative of the music. The performers enjoyed themselves so much that they've all promised to return for

next year's event. Thanks Alistair.

**Look out for** your unguarded water tanks. The Paparoa Hall water tank has been targeted by a water thief! This is particularly upsetting as the A&P Show Committee have now had to buy water in time for the Show on 2nd Feb.

**The Farmer's Market** 6th birthday was a hummer with cars parked all the way up to Skelton Crescent. Eccentric Ukes musicians were a great success enjoyed by all. One young girl had her lovely long red tresses shaved off to raise money for child cancer - more on this next edition.

**As we go to press** the annual Pahi Regatta is about to happen, a great favourite with locals and visitors alike; and the Paparoa Show committee are shifting into high gear with preparations for another major community event. Paddocks are being mown, vehicles are coming and going, animals being trained and groomed to perfection, demo routines being practiced, and prize flowers & vegies coaxed to peak ripeness. Don't miss it! PP

## Freeview Digital TV Transmission is here



15 TV and  
5 Radio/Music  
channels are  
currently being  
transmitted.

Satellite dishes,  
decoders, cable  
etc., supplied  
and installed.

Other channels also available.

**ph Keith the TV Guy**  
(09)4317143 or (021)2394251

## Ruawai Homekills

Full service slaughtering & processing of Beef, Sheep, Pigs, Deer, Goats

**All Beef aged**

**Salami ▲ Bacon ▲ Ham ▲ Sausages  
Hamburger Patties**

**Traditional Manuka wood smoked Bacon, Ham & Salami**

Over 25 years experience

For prompt & professional service contact Wayne or Annette

**09 439 2020 • 021 401 934**

ruawaihomekills@gmail.com  
Information packs available

**Covering the Kaipara and Whangarei regions**



## BACK TO SCHOOL

Top student Jake Powell, from Pahi, will return to Otamatea High School for his last year on 29 January. Jake was very pleased with his grade of "Excellence Endorsed" which was his overall mark for both internal and external NZQA exams he sat last year. Jake has also been endorsed by the staff at OHS with his appointment as Deputy Head Boy for this year.

Outside academic study, Jake is interested in music and film-making. With his friend, Jack

Williamson he took guitar lessons in 2011 and then formed a band named "Deadweight Empire". At the 2012 'Rockquest' for secondary school musicians, the band was 2nd in Northland. A five minute film for the Students Against Driving Drunk (SADD) New Zealand-wide, short film competition, saw Jake's team collect \$800 for their school and \$800 for themselves as winners of the Best Direction category and Judge's Choice.

Jake is unsure of his future career choice. Mechanical engineering is an option but media studies, especially film, is his major



interest. He has just discovered a student doing a conjoint degree in these two subjects at Auckland University so perhaps Jake may be able to follow suit.

Good luck Jake PP

### Lance Keay Contracting Ltd

- Effluent Pond Cleaning
- Single Pass Tillage & Seeding
- Cultivation
- Fertiliser Spreading
- Hay & Silage Mowing
- 6 Ton Trailer

Taipuha RD1, Paparoa. 0571  
09 431 6308 021 383 908  
lance.k@extra.co.nz

## Coastguard News

The North Kaipara Coastguard has had a very busy holiday period. To date their radio operators have received over 391 calls for January alone. Most of these have been taken by Paparoa local and Coastguard stalwart Dorothy Quaife. During this time they were called out to search for an overdue kayaker. Local identity Bobby Smith launched his boat and, accompanied by two other volunteers, commenced what was to be a successful search accomplished with only an hour of daylight left.

The national Coastguard are running their summer lottery, with money from tickets sold reverting to our local Coastguard. Tickets can be purchased from Dorothy Quaife in Paparoa (431 7120) or Walter Smith in Tinopai (09 431 7219).

Walter Smith, President, North Kaipara Coastguard



## katzkutz

quality haircuts and more!  
with fair prices!

Also: foils, tints,  
semi-permanents, crazy colours,  
permanent waving, blow waves

Open Mon-Fri 9am to 5pm  
( 8pm Tuesdays )  
**Call in or phone Katrina**  
**on 09 431 9120**  
Next to Well Kneaded Massage  
Maungaturoto

## PLUMBER

Kaiwaka to Ruawai

- 30 years' experience
- All plumbing services including new housing and maintenance



**ANDREW KENNY**  
ph 027 642 8320

# Matakohe House



**Licensed Café  
and  
Bed & Breakfast  
Accommodation**

**CAFÉ:** Open every day for Lunch,  
Morning & Afternoon Teas, and Dinners

*Check out some Matakohe House specialties:*

MUSSELL & KUMARA FRITTERS (to die for)  
NACHOS (spicy beef with sour cream)  
'A LA CARTE' Dinner Menu

**all our food is home cooked**

**Bookings are absolutely essential for dinners**

**WE CATER FOR ALL CELEBRATIONS - GIVE US A CALL**  
**Matakohe House, 24 Church Road, Matakohe 09 431 7091**

## Paparoa School looks forward to exciting year in 2013



2013 promises to be the start of an exciting new era for Paparoa Primary School.

Our new principal, Mrs Kim Tavinor starts in Term 1. She has moved into Pahi Road to live, together with her husband Barry and son Dylan.

The Tavinors are keen sportspeople and have represented Northland in hockey. They all love the outdoors, living by the beach, and are looking forward to being involved in the wider Paparoa Community.

Mrs Tavinor can't wait to teach the junior children at Paparoa School and utilise the great digital technology that the school has.

She is an Information & Communications Technology (ICT) enthusiast and enjoys integrating ICT throughout the classroom programme. She enjoys teaching all curriculum areas, with a particular appreciation for mathematics and literacy.

Being an active person Mrs Tavinor loves all sports and being in the outdoors and wants to pass on some of this expertise to the students of Paparoa School.



Pupils show new Principal Kim Tavinor

She says "One of the main goals for the school this year is to increase our roll. We plan to do this by showing the Paparoa Community that we are the 'best little school in the country'.

One of our main aims is to have 'fun' while learning."

## A1 Cats

### Boarding Cattery

Ken & Faye  
Subritzky  
548 Pahi Rd



Ph 09 431 7477  
www.a1cats.co.nz

## Kevin's Shed

### panel beating & repairs

*Just ask*

027 642 4991  
09 431 6444



3245 Paparua-Dakleigh Rd

## Locals at the Lighthouse ...

When Jim Rowlands of Kaipara Builders did his first work for the New Zealand Historic Places Trust nearly ten years ago, he never imagined that in 2013, he and his team would be spending five weeks living at Pouto while carrying out major works on the Kaipara North Head Lighthouse which is part of the Trust's property portfolio.

Jim and his team of:

Adam Stevens, Peter Risbridge, Leon Weber (Weber Painters) and Chris Sterling (Night Watchman and painting assistant) have been at work since early January.

The lighthouse is isolated; the only access is over the sand dunes or along the beach (with a very steep climb at the end), and getting all the gear and equipment required for the job to the site was a logistical nightmare.

On the first day, in a gusty 30+ knot wind, Ralph Schultz of Ralph Schultz Helicopters (Whakapirau), made 10 trips lifting in three tonnes of building materials, tools

and machinery, scaffolding and water tanks from a site on a local farm, to the flat area on the edge of the cliff in front of the lighthouse. He then filled the tanks with monsoon buckets of water from a dune lake (and don't forget that all this, minus the water, has to come back as

well). That same afternoon, staff from Trade Hire (Warkworth) arrived to erect the light, all-aluminium scaffolding with the job not completed until noon the following day. Work on the building includes external water-blasting; re-coating with four coats of specialist paints; stripping out and replacing the floor on the lantern platform; re-furbishing the lantern windows; replacing corner flashings; and an extremely difficult replacement of part of a major structural corner support. All this in a spot where the only power is supplied by a small generator, and in the face of some extreme weather at one of the harshest weather sites in /....

Photograph  
courtesy of  
Noel Hilliam, Dargaville



The North Kaipara Agricultural Association Presents . . .

## The 137<sup>th</sup> PAPAROA Show

February 2<sup>nd</sup> 2013 at PAPAROA Showgrounds

Gates Open 9am – EFTPOS Available

Adults \$8 - Children \$4 - Under 5yrs Free - Free Parking on Grounds

⊗ Sideshows ⊗ Food ⊗ Arts & Crafts ⊗ Photography Section ⊗ Alpacas ⊗

⊗ Cooking Section ⊗ Shearing ⊗ Talent Quest ⊗ Show Cattle ⊗ Dog Agility ⊗ Calf Club Section ⊗

February 3<sup>rd</sup> 2013 Horse Show (FREE Entry)

ALL ENQUIRIES to Kate 09 431 7040 or Carol 09 431 6006 or www.paparoashow.homestead.com



## BATTENSBY Bros.

### CONTRACTING LTD

- Ground Cultivation • Silage and Hay
- Fertiliser Spreading • Fencing



Glenn 021 983 734 Ross 021 983 594

Ph: 09 431 6186 Email: battensbybrothers@xtra.co.nz

*You won't go away hungry!*

## THE CRUISER

### BAR and GRILL

- Wholesome, affordable meals
- Fully licensed
- Family friendly
- Inside-outside dining
- Private functions

In the  
village,  
Paparua  
Valley  
Road



OPEN WEDNESDAY to SUNDAY, 5pm 'TIL LATE

ph 09 431 6918



# the Pouto restoration story

... New Zealand. Every puff of wind is laden with sand and the wind is constant - making the conditions very trying and tiring to work in. The sand dunes shift with every change in the wind and on one memorable day, the wind blew at more than 40 knots. Goggles or glasses to protect the eyes have become permanent wear.

All the team (except Chris) stay at Pouto. They all take their evening meal here where they're fed and watered by the 6th member of the team, Loraine (Rowlands). Transport to work is by 4wd vehicles, seven kilometres along the beach and then up the long,



The restoration team



Left to right: Chris Sterling, Jim Rowlands, Adam Stevens, Peter Risbridge, Leon Weber

6th member of the team



Lorraine Rowlands at team HQ

steep climb to the ledge where the lighthouse sits.

Work hours are as long as possible but sometimes vary due to the dictates of the tide. Even though the conditions are difficult and the Historic Places Trust requirements exacting, Jim and Loraine feel honoured that Kaipara Builders has been selected to manage the project. One visitor was astounded that there were people in the district with the necessary skills and expertise to carry out

such a major project!

- The original lantern room and light were removed from North Head Lighthouse in 1944 and placed in storage in Wellington. The present lantern is smaller and was originally on Hokitika Lighthouse. Kaipara's lantern room was re-located to Cape Saunders, near Dunedin in 1967 while the light stayed in storage. The lantern room remains on the Otago Peninsula but the light has now been returned to Kaipara and is on display at Dargaville Museum.

- To organise a trip to see the Lighthouse contact Jock Wills on 09 439 6678

"No job too small"

**Ross Latto**

**LICENSED  
BUILDER**

House construction, alterations, renovations, general repairs

Ph 09 431 7442 021 772 766

PO Box 17, Paparoa



*The Old Post Office  
Guest House*

**Bed & Breakfast**

Your hosts: Deb and Kevin 09 431 6444  
paparoadeb@xtra.co.nz  
www.oldpostofficeguesthouse.co.nz

SMALL GROUPS OR LARGE  
MEALS ON REQUEST

For a warm  
welcome



Serving the community since 1903

## Paparoa Store

Proudly Supporting Paparoa

OPEN 7 DAYS

Monday-Saturday 7am-6pm

Sunday 9am-5pm



We stock a great selection of  
CONFECTIONERY, ORGANIC, DELI, MEAT,  
FRUIT, VEGES, FROZEN GOODS, BEER, WINE  
and a wide range of grocery items at excellent prices

DVD's \$1 to \$8 per night

EFTPOS NZ HERALD POST CENTRE

Phone / Fax 431-7320

Cnr. Franklin Road and State Highway 12

## Community Connexions - Arty Farties Inc. update

The roadside stall continues to be a great success and money raised is being put to good use in supplying produce to the local foodbanks. A lot of families are struggling to survive under the present economic downturn, so every product that you purchase from our stall goes towards helping those in need. What might seem a small contribution may add up to play a big part in someone else's life. The Community Gardens are to undergo a major replanting programme for the coming cooler season and volunteers will be on hand to assist in this venture. Where would we be without volunteers? Plans are underway to transform the potting shed into a classroom so that classes can resume on site.

Anne Shanks



**Rhoda Morrison**

Your Full Time Local Real Estate Agent

Top Rural Sales Agent 2010/11  
Region 1

Listing to sell NOW

09-431 6912  
0274 800 691

rhodamorison@xtra.co.nz  
www.roperandjones.co.nz



first  
national  
REAL ESTATE

Roper & Jones Licensed REAA 2008

Dargaville Realty Ltd

# LANDSCAPE SUPPLIES



OPEN:  
Weekdays  
8am to 5pm  
Saturday  
8am to noon

## Powell Contracting Ltd

Diggers and Trucks for all your  
Earthwork and Cartage requirements

### Now Stocking

Daltons & Watkins:

- Potting Mix
- Compost
- Bagged Shell
- Pebble and Scoria
- Bark & Fertiliser



### We Also Stock

Bulk Compost	Timber
Topsoil	Posts
Sand	Battens
Riverstones	All grades of metal Nails & Staples
Lime Chip	Pro-max water tanks
Blue Chip	Aqua water tanks
Bark	Drain coil
Post Peelings	Culverts
Woodchip	Hurricane Gates
Builders Mix	Full range of
Cement	StrainRite fencing supplies
Easi-crete	



Powell Contracting Ltd, 2088 Paparoa Valley Road, Paparoa  
Ph/Fax 09 4316 331

## Positively Paparoa ...

Recently Commissioner Colin Dale from Kaipara District Council commented to a local resident that he had heard very positive feedback on Paparoa's 150th Celebrations. He was surprised to learn of all the other things that had happened in the area in recent years. In particular he thought the extension of Lions Bush Walkway, the developments on The Landing, and the publication of Paparoa Press were outstanding.

He praised the community for its positive attitude and promised to present to his fellow commissioners an update on the happenings in Paparoa. He said that while funds were understandably tight, Council would support local initiatives that benefitted the wider community.



The Landing

He undertook to keep in touch with the community and personally support projects that had community backing.

Commissioner Dale has responsibility for community liaison in Kaipara District. PP



The Village Green

## MUSEUM MUSINGS ...

### Nurse Cavell Lane

Many of you will remember an earlier reference to the Kauri Museum's Heritage Roses, planted last year at several locations around the museum. These are developing into a very good display, with climbers as well as bush roses. Everyone of them has a plaque with its name and approximate year of propagation.

Many have French names and some are from original Chinese stock. One in particular seemed to have a local connection, its name is "Miss Edith Cavell" a small red rose, flowering in clumps.

We have our own Nurse Cavell Lane opposite the old hospital in Paparoa, but with further research through Google it became clear that the connection between the road and the rose is purely coincidental. The lane was, in fact, named after the old hospital, which was called 'The Nurse Cavell Hospital' when it was opened just after the end of World War 1.



Nurse Edith Cavell was working in Belgium at the start of the first world war and helped many British and French soldiers escape the clutches of the German army until she was arrested and confessed to her activities, whereupon the German commander had her executed by firing squad.

From that time she has been upheld as a heroine and commemorated in many ways, with memorials and statues, and street names throughout the 'Empire' (as it was then) and, in 1917, by a rose breeder in Holland by the name of de Ruiter, whose company still exists today.

Graham Roberts

## SKELTON'S

Summer Sale  
on Now

30% off  
all summer  
fashion  
clothing



Other  
specials  
in store  
check them  
out!!

**Skelton's Paparoa Drapery**

Mon-Fri 8.30am to 5pm Sat 9am to noon

Ph 431 7306



## KAIPARA LIFE - TIDES

Every now and then something happens to remind me of how much I take for granted the strange and powerful forces that play such a big part in my daily life.

I had one of these insights recently whilst enjoying a day out on the Kaipara. It was on a ferociously hot day during early January. I was sitting in the back of *Patiki*, rod in hand, trying to keep out of the sun which was trying to scorch me to a crisp. Not a lot was happening fishing-wise and so my idle gaze was drawn to the water rippling past our little launch.

High tide was upon us and the tidal 'brakes' were hard at work. Before long the salty flow had slowed, stopped and changed smoothly into reverse sending the steady stream of mangrove seeds that had been bobbing past all day back in the opposite direction at a speed that I soon estimated to be about one metre per second.

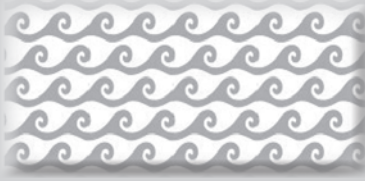
Pondering this process I recalled

being told that a cubic metre of water weighs something like one tonne. I looked around and realised I was in the midst of many thousands of cubic metres of the stuff, and therefore many thousands of tonnes of water all streaming along in one direction and then, nek minit, racing back the opposite way.

I thought about the brute force required to achieve such a feat and found it almost beyond my comprehension - this amazing power that exerts itself silently, invisibly every six hours, day in, day out.

Ok so, although the exact mechanics are beyond me, I accept that this is all caused by a smallish planetary body circling the earth many thousands of kilometres up in space. I know that but, even so, the reality of that amount of raw power unleashed in its unending, silent cycles is nothing short of awe-inspiring!

Christine Yardley



## HOOK, LINE & SINKER

There are loads of fish in the harbour just waiting to be caught. Gravy set out from Pahi in his dinghy with 2hp outboard early one morning recently and was back before 8am with 10 good sized snapper. Once filleted, by his calculations, there was over \$75 worth of fresh fish fillets sitting in the fridge for hardly any effort at all.

On a recent trip in the 'Gravy Boat' with the ex-Commodore of Brown's Bay Boating Club who was holidaying at Whakapirau, and other friends, the team left at 9am and were back at 12.20pm with 50 snapper caught around from Tinopai at Bushy Point. On the day of the Tinopai Fishing Contest over 40 good-sized snapper were brought aboard from a spot not far away. Big snapper were brought back from the 'Graveyard' for weigh-in by boats which had been fishing down at the Heads.

There are also plenty of kahawai around and kingfish have been caught recently. Gravy advises that if you think you have a sting ray on the line and don't want to land it, don't give up. It might be a kingfish which hangs on the line just like a stingray.

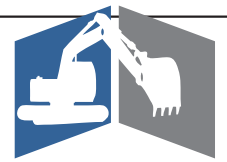
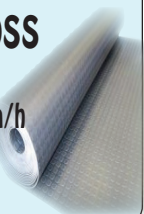
Happy fishing!

## Carpet Layer

20 years experience

phone **Ian Ross**

09 431 6939 a/h  
027 4996 413



**HUBAND**  
CONTRACTORS LTD

**ROADING • EARTHWORKS  
DRAINAGE • SITEWORKS**

For enquiries, contact Shaun:

**Cell: 021 222 0272**

**Home: 09 431 8339**

**Email: admin@huband.co.nz**

**Registered Drainlayers**

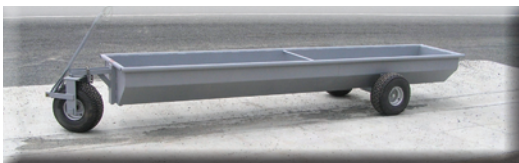
## Crompton Engineering Ltd

Phone/fax 09 439 2393  
31 Jellicoe Road, Ruawai



**Hay Racks**  
- covered  
or uncovered

**Palm Kernel  
Trailers**



website: [cromptonengineering.co.nz](http://cromptonengineering.co.nz)  
email: [crompton.eng@xtra.co.nz](mailto:crompton.eng@xtra.co.nz)

## Matakohe Music & Arts Festival

What a way to start off 2013. With blue skies and sunshine, an idyllic venue with plenty of shade, and wonderful music from the 60's & 70's, it was impossible not to enjoy one's self.

Pat & Steve George's property was the place to be, with Matakohe local Alistair Taylor and his band *Shadz*; Karen Davey; *Indigo Blue*; *Paul TT*; and, last but not least, Tom Sharplin. Toes were tapping, hands clapping, and the really energetic were up rockin' their socks off!



Sun umbrellas and gazebos were prominent with deck chairs and picnic rugs, and although some delicious looking picnic food was evident, many were tempted by the homemade ice-cream supplied by our own Loraine Rowlands and several busy food stalls.



Plus there was an interesting variety of craft and art stalls to peruse when you needed to stretch your legs.

If you procrastinated this year and missed this great event, make sure you get there next January, bring the family & friends. It's a great family day out.

See you there.

Home-made ice cream anyone?

Janice Booth



## The Glass Guy



Phone Colin  
09 431 6595

## LACK OF RAINFALL FOR KAIPARA

The Paparoa Stream has stopped flowing above the village. It's a couple of years since the stream last appeared so affected by lack of rainfall. Recent high winds also aggravate the drying effect.

Radio New Zealand reported recently: *'The Kaipara district has had no significant rain since the middle of December. Farmers are worried about the lack of rain, while kumara growers are happy with the hot dry weather.'*

## Sport in Paparoa

**PAPAROA TENNIS** continues to be popular with local children and teenagers from Paparoa, Matakoho and Maungaturoto.

Each Saturday we have either local coach Sue Skelton, or a Tennis Northland coach, Grant van Dalsun, to teach the basics of tennis. We are seeing great improvements in the children's skills and the adults who stay for their own coaching.

One of our teenage members, David Jenkins participated in the Northland secondary school tournament held in Whangarei at the end of last year, and hopefully there will be more representatives as their skills develop.

New members, or anyone who wants to have a go, are always welcome at either the Tuesday evening or Friday morning sessions.

We are a social not competitive club, although club championships for those who are keen will likely be held at the end of the season.

Contact Sue Skelton for any details 431 6224.



Coach Grant van Dalsun with a group of the young tennis players he coaches at the Paparoa Sports

**TABLE TENNIS** is held in the Sports Pavilion from 7.30pm following the Tuesday evening tennis session. We have a mix of experienced and not so experienced players coming along, and we play both singles and doubles to cater for all levels. More teenagers and adults are very welcome to play – it is not as strenuous as tennis! but is still heaps of fun. Contact Pete Hames Pete and Libby

## Country Cutz

Gay Northcott  
The Salon - Paparoa Village



Fully qualified  
and professional  
friendly service

- Ladies & Mens Cuts
- Perms, Colours & Highlights
- Weddings

Open Thurs-Fri  
Wed & Sat by appt

After hours phone Gay 431 7007  
Salon 431 7255

Wendy Sheppard  
Ryan Sheppard

catering for all occasions  
from finger-foods to buffets

**CaterKing**  
catering for all occasions  
from finger-foods to buffets

Ph: 09 431 7301

Mob: 021 458 804

caterkingcaterers@hotmail.co.nz

CALL US FOR A FREE QUOTE

# FREE tyre safety check.

Keep your family safe this summer.

**Garnetts Tyre Service, now trading as Bridgestone Tyre Centre is proud to be Maungaturoto's tyre specialist and part of the community since 1958.**

You'll still receive the same great service and with over 35 years of experience, Dean and Reece have the expertise to recommend the best tyre for your needs.

**See us for tyres • wheel alignment servicing • batteries and more.**

**Garnetts Tyre Service**  
2 Gorge Rd, Maungaturoto. Ph 09 431 8255.

**BRIDGESTONE TYRE CENTRE**



# art ... School's back

Art is an important part of school learning, not just one of the "frills" (fun to do but not as worthwhile as reading or maths).

Art is about observation, using visual cues to understand the world, and imagination, trying out ideas about how the world might be.

Visual observation is recorded by drawing. Young children's drawings show the importance in their lives of faces, and as they grow, they notice and show more details. Five fingers, curly hair, a striped shirt. As observational skills develop with practice, a child can learn more about the world: how many legs has an insect, what shape is that leaf, how can the colour show how far away the hills are, is the sky darker if you look straight up?

What if trees were purple, if cars flew in the sky, if people were huge and houses were tiny? If I made a monster mask could it be scary? This is me in a pink castle, exploring Mars.

Art encourages you to ask questions, to explore what is and what might be in the same way that stories do. And in the same way, children need to make art and also look at and experience good art, to be inspired and challenged.

Art supports science and maths as children learn to see how things really are, exploring structures and relationships. History and geography become vivid through paintings of other times and places, and the crafts and arts of other cultures.

And it isn't any less worthwhile if it's fun.

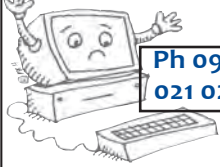


Helen Budd



## R & D MACDONALD COMPUTERS

Call Ross with your computer problems & repairs  
He'll even build a computer to your specifications



Ph 09 431 6221  
021 0248 4485

email: ross@paradisebreeders.co.nz

## MEAT at the MARKET

Quality bacon, pork, sausages & small goods now available at the Paparoa Farmers' Market every 2nd Saturday, 9am-noon Paparoa Village Green



Long Flat Bacon Company

www.longflatbacon.co.nz

## In Residence:

### Maungaturoto Rest Home

Rest Home staff are currently caring for nine residents:

**Janice Clemson**  
family in Mangawhai

**Patricia Valkenburg**  
family in Kaiwaka

**Grace Phillips**  
family in Mangawhai

**Agnes Hill**  
Jan Schimanski's mother

**Helen Simpson**  
from Kaiwaka

**Doreen Smith**  
Don McKay's aunt

**Marion Wallis**  
wife of Max, life-long  
Maungaturoto resident

**Phil Dickens**  
father of Robin and another  
long-time Maungaturoto  
resident

**Freda Parker**  
from Kaiwaka

## Paparoa Community Library



**Best wishes to everyone from the Library Committee and staff for a happy and safe 2013**

The library reopened on 4th January to freshly painted walls and beautiful new curtains to protect our books from the sun. Those in the children's room are a delight and have brought many appreciative comments. Thank you so much Cathy and Andrew, you have given the library a real face lift.

The Library has received a very generous gift of shelves from Matakohe School and we are most grateful to them. We have been trying to obtain a grant to purchase replacement shelving for a long time without success. We hope to have them in place as soon as staff are able to spend a day or two in the library. Hopefully the audio books and jigsaw puzzles will look much tidier, and the children's room may receive a much needed make over.

Our thanks go to all those generous people who have donated books to

us throughout the year. These are very much appreciated and provide a wider variety of reading than our annual budget allows.

Jenny Fenwick, Librarian  
Paparoa Community Library

## Birt & Currie Surveyors Ltd



Local Phone  
09 280-9591

**Timely,  
friendly &  
personal  
service**

info@landsurveyors.co.nz  
www.landsurveyors.co.nz  
PO Box 120 Paparoa 0543

## Paparoa Fire Force



### SAD LOSS FOR KAIPARA - NATIVE WILDLIFE LOST IN FIRE

Hello from the Fire Force. We hope everyone is having a good summer. January has been a really busy month so far, let's hope it quiets down over February. It's very hot and dry at the moment so we all need to be extra careful.

Callouts:

#### November 2012

8th Grass Fire Pahi  
29th Car down a bank SH12

#### December 2012

Nothing to report - Yay ☺

#### January 2013

2nd Scrub Fire Mangawhai  
14th False Alarm Kauri Museum  
21st Scrub Fire Tinopai  
22nd, 23rd, 24th, 25th  
Large Scrub Fire Kellys Bay, Pouto

New members are always needed - especially for callouts during the day. If you are interested, please come along to training or call Yvonne 09 431 6668 for more information. Training nights are the first & third Monday of each month, 6.30pm at the station on Depot Rd., off Pahi Road, Paparoa.

Yvonne Yorke

As we go to print, volunteers from the Paparoa Rural Fire Force have assisted for five days running at the large scrub and bush fire burning at Kelly's Bay, Pouto. The team has been hosing scrub, delivering water and assisting fire crews from around Northland. Four helicopters were working on day one of the fire, while at that stage the actual fire area was too dangerous for people to enter. As reported by DoC "the whole of a wetland conservation area has been burnt", and "We've had things like geckos and birds ... being cooked up in the fire, ... it's not a nice thing to see."

It's not yet known whether the fire may have been deliberately set, though there is some suspicion of this being the case. Investigators will focus in more detail once the fire and all hotspots are controlled. We wonder if the useless tossers who might do this sort of thing spare any thought for the agonies suffered by innocent creatures caught in the fallout of such an act.

Ed.

## BREAM BAY Design & Print LTD

100% Locally  
Owned &  
Operated  
Since 2004

Proud to be a *PartLife* Print Champion

Brought to you by:  
**PRINTNZ**  
our industry, our people

### Printers & Graphic Designers Your LOCAL one stop shop!

- ♦ Graphic Design, Logo Creation ♦ Brochures, Flyers, Labels
- ♦ Docket books & NCR ♦ Postcards, Envelopes & Booklets
- ♦ Invitations, Photo Books ♦ Digital, Letterpress, Offset
- ♦ Wide Format Posters & Plans

### STAND OUT FROM THE CROWD!

### FRIGHTENED OF THE COST? DON'T BE

WE WILL WORK WITH **YOUR BUDGET!**  
AND WILL GIVE YOU A FREE **NO OBLIGATION PRICE**  
BEFORE STARTING ANY WORK!

**PRINTNZ member**  
our industry, our people

www.breambayprint.co.nz  
P: 09 439 3100 | 09 432 8998  
design@breambayprint.co.nz

## Pets in the Valley



**QUESTION:** What is it that if you do to a human you break the law but if you don't do it to an animal you are breaking the law?

**ANSWER:** Euthanasia. The recent case of Evan Mott assisting his wife to die highlighted the ever present dilemma of how to end the suffering of a terminally ill loved one.

With animals the dilemmas are different but sometimes still very difficult to deal with. Obviously there aren't issues of religion and estates but deciding when is the right time to end the life



of a chronically ill or old animal is not always easy to decide. If there is a sudden accident or decline in demeanour it is easier but if you are seeing an animal every day you can miss the point at which they are suffering too much.

Questions like *Are they still enjoying life?* or *Do you think they are in pain?* may help but they are still rather objective and unlike humans we can't ask for the animals opinion. Some animals will be perfectly happy lying around all day but some may be suffering.

Cost is a big factor too. There are lots of things we can do to help older animals but lab tests and drugs are expensive and not subsidised. Somewhere there is a balance and if you really can't afford the best for your pet at least euthanasia is another option.

Janine Hames

## PAPAROA LIBRARY : BOOK REVIEW

**Author: Jo Nesbo** Former police reporter and acclaimed author of over 24 internationally recognised top sellers, printed in many languages. Winner of several mystery writer awards, and ex-President of the Mystery Writers of America.

**Title: *The Bat*** (the first in the 'Harry Hole' series)

Harry Hole is young, he has made a bad start to his new role as Detective in Norway and is sent to Australia to converse with the locals on the death of a young Norwegian woman in Sydney. It should be straightforward, but his findings are not what was expected of him so he's in trouble again, and this time he has an old foe tracking him down, the booze bottle. He is in a race with time to solve the death of the woman, or he'll be killed - by the booze. Both are serial killers in a sense, they kill until stopped, but one of them is a highly intelligent killer.

The book is set part way through Harry Hole's early life. If you know Sydney you'll enjoy this book even more. Having lived in this part of Sydney for around 5 years I was immediately able to identify with the story, the people, and the places. It has twists and turns as only Nesbo can do well. You think you have it worked out when another small clue is given and you have to re-evaluate your thoughts. This is why I enjoy his writing as it always makes you re-examine your predetermined ideas.

Reviewer: Peter Colmore-Williams

## Paparoa Motor Camp



check out  
our  
self-contained  
cottages

- Tent and Van sites, Cabins, Kitchen, Showers ● Internet available ● Public Laundry facilities ● Pump-out Station

**Ph 09 431 6515**

cnr SH12 and Pahi Road, Paparoa

## New Selwyn Centre to open in Paparoa

Older people in the Paparoa, Matakoho, Whakapirau, Ararua, Hukatere and Tinopai areas will now have the chance to meet others and socialise in the friendly, caring environment of a Selwyn Centre.

From 7 February, the new Centre will be open every Thursday at St Mark's Church in Hook Road, Paparoa, from 9.30am to 12 noon. The Centre will offer a programme of social games, gentle exercise and morning tea, for anyone aged over 65, for a gold coin donation.

Centre coordinator, Richard Binns, says: "We are looking forward to welcoming guests to the Paparoa Selwyn Centre for seniors, where we will meet to enjoy ourselves, catch up with other people from the area and have lots of fun as family."

For further details on the Paparoa Selwyn Centre, contact Richard Binns on 431 8193, 021 212 4911 or 486 7578, email: binnsco@clear.net.nz

## PAINTER

For all your painting requirements

- Interior
- Exterior
- Roofs
- Mould spraying
- Waterblasting

Many local references  
No job too small

**For a quality job, phone Dave  
09 431 6623 or 027 490 3522**

*Make new friends*

*Keep the old*

*One is silver*

*The other gold*

Paparoa Press PP  
**CLASSIFIED ADVERTISING**

### Bee Swarms

if you see  
any bee swarms  
ph Mike 431 6008

## g.a.s. Paparoa



- Petrol, Diesel & Oil
- **LOWEST** priced milk
- Great variety of Bait



### Local tides for February 2013

#### FEBRUARY TIDES - CALCULATED for PAHI-WHAKAPIRAU

DATE	LOW	HIGH	DATE	LOW	HIGH
1st	8.56am	3.22pm	17th	10.32am	4.55pm
2nd	9.41am	4.09pm	18th	11.27am	5.50pm
3rd	10.34am	5.03pm	19th	12.34pm	6.55pm
4th	11.37am	6.07pm	20th	1.50pm	7.48am
5th	12.52pm	7.20pm	21st	2.58pm	9.01am
6th	2.10pm	8.05am	22nd	3.51pm	9.58am
7th	3.22pm	9.21am	23rd	4.35pm	10.42am
8th	4.23pm	10.25am	24th	5.14pm	11.20am
9th	5.16pm	11.18am	25th	5.50pm	11.56am
10th	6.03pm	12.06pm	26th	6.26pm	12.30pm
11th	6.48pm	12.50pm	27th	7.03pm	1.05pm
12th	7.30pm	1.31pm	28th	7.42pm	2.41pm
13th	7.45am	2.11pm			
14th	8.25am	2.50pm			
15th	9.05am	3.29pm			
16th	9.46am	4.09pm			

John & Nicki Eddy  
09 431-6302

Mon-Sat 6.30am - 6.30pm  
Sun 7.30am - 5.30pm

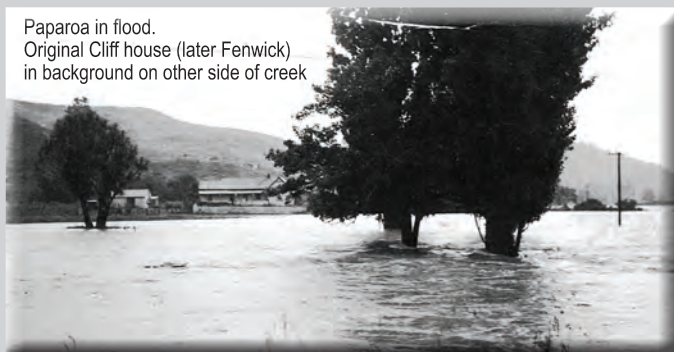


## Heritage Hotspot

Just over the bridge at the beginning of the Paparoa Lions Walkway, you will notice a raised flat area over the fence on your right. This is the site of the homestead built for James and Mary Cliff who came with their family (two sons, daughter, and daughter-in-law and grandchild) on the "Matilda Wattenbach" as part of the Albertland movement.

The entrance to the property was by bridge over the creek from a spot at the back of "The Landing". You can still easily see the embankment for the bridge but it is now shaded by a large tree. The river flat was very fertile and Mr Cliff maintained a fine orchard there.

Paparoa in flood.  
Original Cliff house (later Fenwick)  
in background on other side of creek



It is mentioned in *The Albertlanders* where the author writes that the newly built Skelton's Bridge was "..... carried away by a heavy flood, and deposited on Grandfather Cliff's orchard a little lower down the stream. Grandfather was exceedingly wrath about it".

## Northland Wood Products

All building,  
fencing,  
landscaping  
supplies

Ararua Rd  
431 6183  
021 134 6957

## FENCING CONTRACTOR

For all types of fencing, stockyards,  
handyman work, tree felling, tractor work etc.



phone

**Mike 09 431 6509  
027 203 2694**

email

mandsplunkett@slingshot.co.nz

## FARMWORK SERVICES LTD

## Heads-up for Advertisers

This edition of the Paparoa Press represents completion of our first year for the new-look publication, and the continuation of a highly valued 11-year tradition prior to that. As advised in our March 2012 edition, we will be reviewing our advertising rate card at the end of the initial 12 month period.

Our format and layout have been refined over time and we hope you'll agree that we've arrived at a balance between editorial and advertising content which works in the best interests of both readers and advertisers, giving a quality result for the benefit of all. Any changes to advertising rates will be publicised in upcoming editions.

As always, we welcome your feedback on this your community magazine. Please feel free to communicate your ideas to The Editor at [paparoapress@orcon.net.nz](mailto:paparoapress@orcon.net.nz). Please see the Paparoa Press Advertising Rate Card below, showing the prices we've maintained for the last year. ↓ PP

### Paparoa Press

### ADVERTISING RATE CARD

November 2012

A

6cm x 1 column  
(4.5cm)  
\$20.00



C

1/4 PAGE

B

6cm x 2 column (9cm)  
\$30.00

12cm x 2 column (9cm)

\$35.00 → EXPECT THIS TO  
CHANGE

To List & Sell call today

**Leanne Walker**

Licensee Salesperson

**021 431 619** a/h 09 431 6199

[leanne.walker@raywhite.com](mailto:leanne.walker@raywhite.com)

**Bogue Real Estate Ltd**

Licensed (REAA 2008) 09 431 8820  
[www.rwarkworth.co.nz](http://www.rwarkworth.co.nz)



**Ray White**

**CAR REPAIRS****Cam's Autos**

For all mechanical repairs and warrants of fitness. We service cars, 4WDs, trailers & utes.



Paparao Valley Road  
Ph 09 431 6620

**WHAT'S ON - FEBRUARY 2013**

**A&P Show** Sat 2nd & Sun 3rd Feb - Paparao Showgrounds, Gates open 9am

**Art Group Paparao** 1st Sun in month, Helen Budd's Studio, ph 431 6192

**Art Studio, Ruawai** Mon 10-12noon; Tues 7-9pm ph Frances 439 2554

**Arty Farties** • Summer Markets 9am-noon, opposite the Village Green

car boot sales, arts & craft, children's market

• Thur/Fri in the 'Tile Shed' ph Anne on 431 6229 to enquire

• Crafty Kids Club starts soon, alt Saturdays 10-2pm @ Primary School

• Beginners Patchwork Group, Mon 7pm, Congregational Church

**Badminton** Finished for the year, recommences Term 1 - date to be advised

**Bahai Faith** Enhancing community-building. Wed 12.30 or 7.30 ph 431 8488

**Exercise to Music** Tue 10.30am Paparao Hall \$5 ph Rose 431 7418

**Farmers' Market** Fortnightly Sat 9-noon, Village Green, Feb 9, 23; Mar 9, 23

**Fire Brigade** 1st & 3rd Monday in month 6.30pm Depot Rd ph Cohan 4316668

**Gardening Club** 2nd Wed of month, ph Sharon 431 7159

**Grey Power** Last Wed in month, 2pm, Hall next to Resthome, M'gto

**Indoor Bowls** ph Loraine 431 7290 or Robyn 431 7306

**Library** Mon 1.30-4.30pm, Wed 10am-12noon, Fri 9.30am-1pm  
open all Market days - alternate Saturdays 9.30-1pm

**Line Dancing** Ph Rose 431 7418

**Mainly Music** Wed 9.30am Paparao Comm Church, ph Rebecca 431 7550

**Music Makers** 2nd Tues of month 7.30pm @ Cruiser Bar & Grill

**Paparao Community Church** 10.30am every Sunday, Hook Road

**Paparao Lions Pioneer Luncheon** Fri 15 March, Paparao Hall

**Paparao Playcentre** Tue & Fri 9.30-12noon, Visitors welcome ph Renee 431 6336

**Paparao Plunket Society Coffee Group**

First Tues of month, 10am Franklin Rd, next to School

**Paparao School** Term 1: 29 Jan - 19 Apr; Term 2: 6 May - 12 Jly;

Term 3: 29 Jly - 27 Sep; Term 4: 14 Oct - 13 Dec

**Paparao St Marks Anglican Church** 2nd & 4th Sundays, 10am, Hook Rd

**Paparao Toy Library** Wed 10.30-1pm, Paparao Comm Church, Hilary 431 7330

**Sports Pavilion** Functions venue, ph Vickie Owens 431 6432 for bookings

**St Mary's Catholic Church** 10am Wed, 6pm Sat, Maungaturoto

**Tai Chi** Tues 1pm, Paparao Hall, ph Shirley 431 6408

**Table Tennis** Tues 7.30pm, Sports Pavilion \$2 Pete 431 6822

**Tennis** Adult Tue 6pm, Social Fri 10am. Children/teens coaching Sat from 9.30  
Courts open for casual play - \$2/honesty box ph Sue Skelton 431 6224  
Next Coaching session 9 Feb

**Ukelele Players** Beginners/experts, Thu 5.15pm Matakohē, ph Dennise 431 7012

**Waka Ama** Sunday 10am, Pahi Domain

**Wearable Arts Gala meeting** 7.30pm Tues 19 Feb, Paparao Hall - All welcome

PLEASE UPDATE US WITH YOUR DETAILS: [paparaoapress@orcon.net.nz](mailto:paparaoapress@orcon.net.nz)

**REMEMBER!**

MG Boarding Kennels

MATAKOHE



PHONE 09-431 7368

Fun holidays for your pets

Your pets need a holiday too

**Place your Ad here**

reaching your community for only \$20/month

all proceeds from advertising go toward community projects

contact Paparao Press

09 431 7144 a/h

[paparaoapress@orcon.net.nz](mailto:paparaoapress@orcon.net.nz)

**REX BROWNE CONTRACTING**

- Limestone & Metal Cartage
- Truck & Digger Hire
- Farm Roads
- Earthwork & Dams
- House Sites & driveways
- Wrapped Silage & Hay
- Cultivation
- Fencing & Mulching



Maize Silage planting & harvesting

09 431 7556

021 720 590

**ELECTRICAL SERVICES LTD****Ed Hinson**

Registered Electrician

09 431 6117 Mob 021 1671 843

▪ COMMERCIAL ▪ DOMESTIC ▪ INDUSTRIAL ▪

**Ross Murphy Plumber**

CERTIFYING PLUMBER

NEW HOUSING  
RENOVATIONS  
MAINTENANCE



09 431 7510  
021 424 252

**Community Directory**

EMERGENCY: FIRE ■ POLICE ■ AMBULANCE dial 111

**COAST TO COAST HEALTH CARE**

Maungaturoto Medical Centre 8am-5pm Mon-Fri .... 09 431 8576

Paparao Clinic: Doctor Tuesday 8.30am-12.30pm .... 09 431 7222

Nurse-only Friday 8.30am-12.30pm .... 09 431 7222

For urgent after hours medical service (Wellsford)..... 09 423 8086

**DISTRICT NURSE** Dargaville Hospital ..... 09 439 3330

Healthline - 24 hour service..... 0800 611 116

**HOMEBUILDERS & FAMILY HELP** Community House.... 09 431 9080

**HOSPICE KAIPARA** Dargaville Hospital ..... 09 439 3330

**KAIPARA DISTRICT COUNCIL** Helpline ..... 0800 727 059

Kaiwaka Office ..... 0800 100 388

**LINKING HANDS** Health Shuttle Service, Maungaturoto 09 431 8969

**MAUNGATUROTO PHARMACY** ..... 09 431 8045

**MAUNGATUROTO REST HOME** ..... 09 431 8696

**PAPARAO LIBRARY** Membership free-of-charge, Wheelchair access  
Mon 1.30-4.30pm, Wed 10am-12noon, Fri 9.30am-1pm  
open all Market days - alternate Saturdays 9.30-1pm

**PAPARAO PLAYCENTRE** Vanessa ..... 09 431 6731  
Renee ..... 09 431 6336

**PAPARAO PLUNKET** Cynthia Keay ..... 09 431 8187  
**PLUNKET** Helpline ..... 0800 933 922

**PAPARAO PRIMARY SCHOOL** ..... 09 431 7379

**PARENT PORT Inc.** free help for families Linda ..... 09 425 9357

**PHYSIOTHERAPY** Lyndsay Bargh Mon/Wed/Fri from 8am...431 8576

**PUKE ARANGA TE KOHANGA REO** ..... 09 431 7089

**YOUTH & WHANAU FOCUS** South Kaipara, Rose ..... 09 431 7418